



TWINPALMS  
EVENTS

# EVENTS

Innovate and Inspire

SMALL  
LUXURY  
HOTELS  
OF THE WORLD

# BE DISTINCTIVE

Phuket Island is a stunning setting to inspire, to motivate and to engage. A location where meetings, events and incentives can be seen in a whole new light against a backdrop of sparkling azure sea and soothing tropical greenery.

Phuket has a wonderland of rejuvenating activities to offer, an abundance of cultural attractions, nature trails and entertainment venues to indulge in. Our hotel and restaurants, beach clubs and lounges are all located on the west coast and all within 10 minutes' drive of the hotel, and conveniently connected by complimentary transport.

Enjoy business and events, enjoy life at  
Twinpalms Phuket





# CATCH BEACH CLUB





# CATCH BEACH CLUB

Catch is most loved for its stunning beachside location and ambience. By day, guests take time to relax, have a dip in the pool and enjoy the fantastic menu. As the sun sets over Bang Tao Bay and the temperature cools down a notch, Catch transforms into a boundless party atmosphere.

## FACTS IN SHORT

**Perfect for:** Cocktail reception, set dinner menu, buffet menu.

**Recommended timing:** Evening dinner then dance under the stars from 9pm until late.

**Capacity:** Maximum 300 guests for cocktails canapés  
Maximum 40 guests for set menu  
Maximum 150 guests for buffet option  
(120 seats indoor / 30 seats outdoor)

**Private function:** Not available.

**Highlights:** Beachside, DJs, captivating entertainment.

# DINING CHOICES

## Food

Cocktails & Canapés

## Price per Guest

THB 600++ hourly charge

## Set Menu *(min. 15 guests)*

Standard Thai Cuisine	THB 1,800++
Andaman Platter	THB 1,890++
Standard Western Cuisine (4 courses)	THB 1,890++
Barbecue Selection	THB 2,190++
Premium Barbecue Selection	THB 2,490++

## Buffet Options *(min. 40 guests)*

Standard Thai Cuisine	THB 1,700++
Premium Thai Cuisine	THB 2,100++
Barbecue Selection	THB 1,900++
Premium Barbecue Selection	THB 2,300++
Catch Friday Evening BBQ (7-10pm)	THB 1,890++ (Incl. half a bottle of house wine)
Sunday Brunch (12-3pm)	THB 1,890++ (Incl. half a bottle of house wine)

## Drink

Alcoholic Open Bar

## Price per Guest

from THB 850++ hourly charge

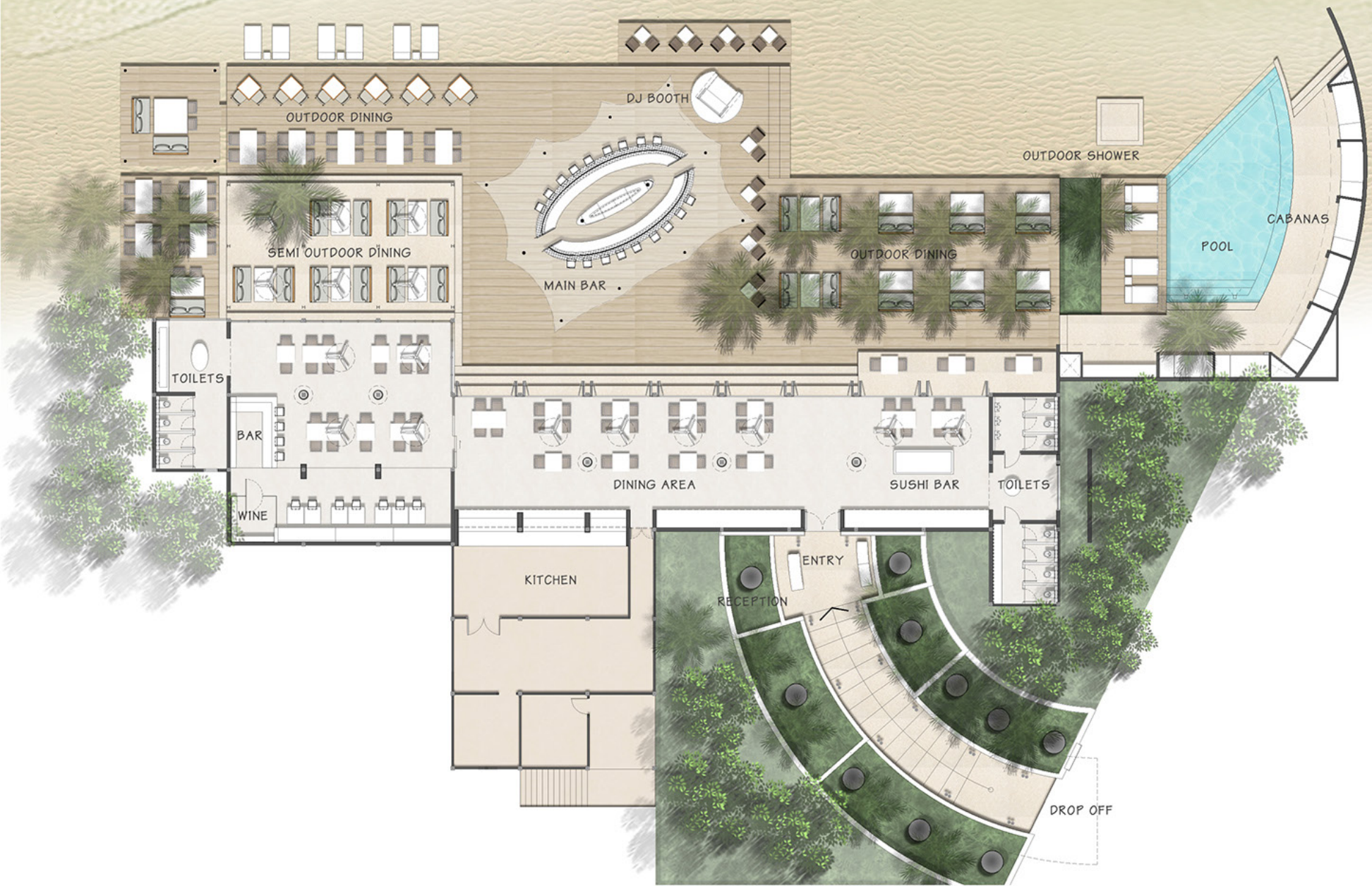
Non-alcoholic Open Bar

THB 500++ hourly charge

All prices are per guest and in Thai Baht, 10% service charge and 7% VAT is added.

ANDAMAN SEA

BEACH



TOILETS

BAR

WINE

KITCHEN

DINING AREA

SUSHI BAR

TOILETS

ENTRY

RECEPTION

DROP OFF

OUTDOOR DINING

SEMI OUTDOOR DINING

MAIN BAR

DJ BOOTH

OUTDOOR DINING

OUTDOOR SHOWER

POOL

CABANAS



# KALIDO





# KALIDO

Gather together on the sea view terrace with cocktails in hand and watch the sky transform into a fiery technicolour sunset spectacle. After enjoying an invigorating prelude to dinner, dine in a striking setting, that evokes the beauty and tranquility of the sea. Enjoy seafood, salads and colourful Thai food presented to you in a way that preserves the traditional tastes of the local cuisine.

## FACTS IN SHORT

**Perfect for:** Cocktail reception, set dinner and buffet event.

**Recommended timing:** Catch the golden hours from 4pm onwards.

**Capacity:** Maximum 150 guests for cocktails canapés  
Maximum 40 guests for set menu  
Maximum 126 guests for buffet option  
(90 seats indoor / 36 seats outdoor)

**Private function:** Requires a venue charge and minimum spend on food and beverages from THB 500,000 net.

**Highlights:** Spacious terrace ideal for enjoying amazing views of Bang Tao Bay and the sunset.

# DINING CHOICES

## Food

Cocktails & Canapés

## Price per Guest

THB 600++ hourly charge

## Seafood Set Menu *(min. 15 guests)*

Thai Seafood

THB 2,000++

Mediterranean Seafood

THB 2,000++

Lobster Feast

THB 2,800++

Andaman Platter

THB 3,100++

## Buffet Options *(min. 40 guests)*

Standard Thai Cuisine

THB 1,800++

Premium Thai Cuisine

THB 2,000++

Barbecue Selection

THB 2,300++

Premium Seafood Barbecue Selection

THB 2,500++

## Drink

Alcoholic Open Bar

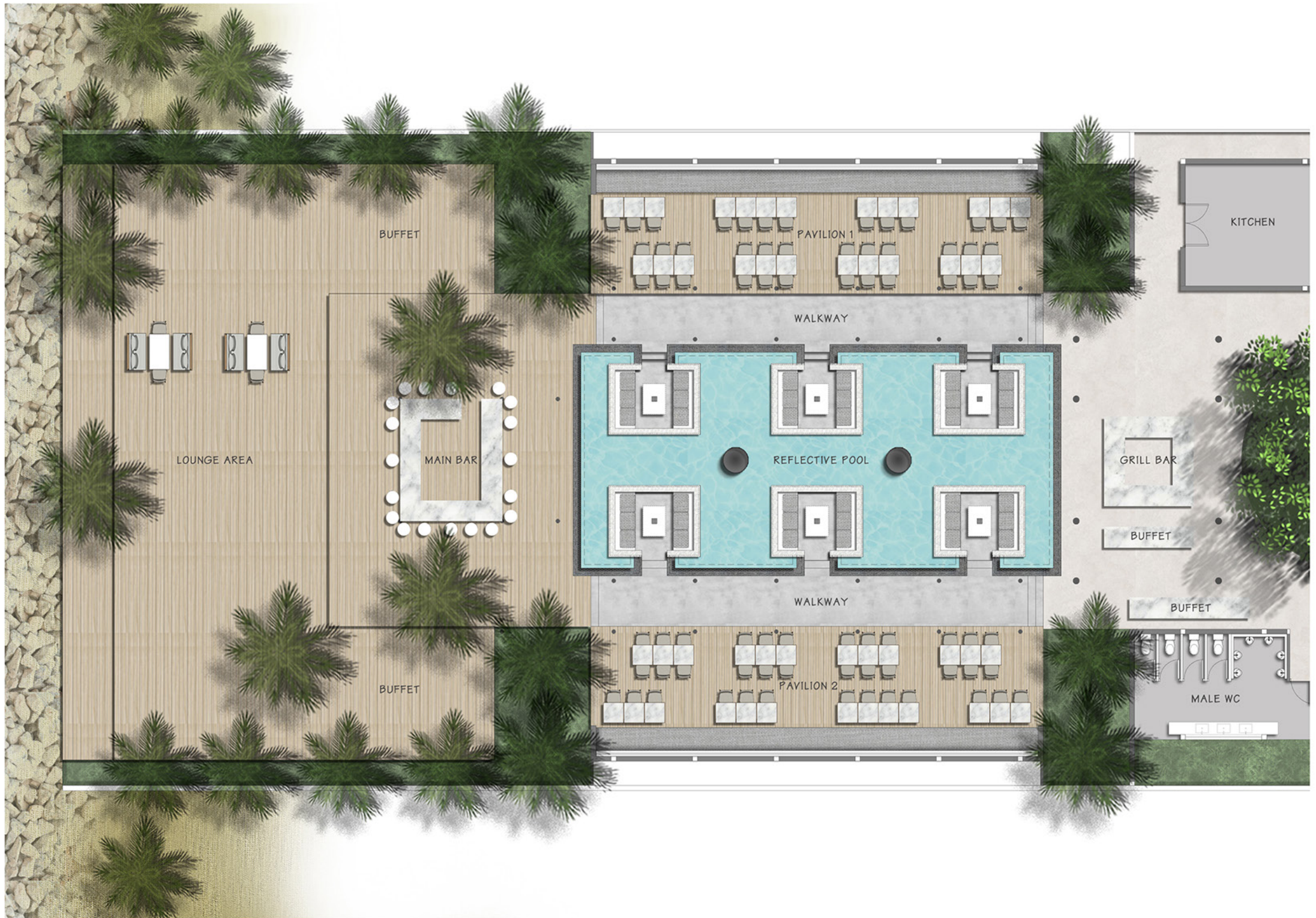
## Price per Guest

from THB 850++ hourly charge

Non-alcoholic Open Bar

THB 500++ hourly charge

All prices are per guest and in Thai Baht, 10% service charge and 7% VAT is added.



BUFFET

LOUNGE AREA

MAIN BAR

PAVILION 1

WALKWAY

REFLECTIVE POOL

WALKWAY

PAVILION 2

KITCHEN

GRILL BAR

BUFFET

BUFFET

MALE WC

BUFFET



# THE LAZY COCONUT





# THE LAZY COCONUT

Dip your toes in the sand and enjoy a laid-back vibe on Bang Tao Beach. The Lazy Coconut is a relaxed beach hangout with a refreshing infinity pool offering complete beach and sea views. Whole fresh-fruit cocktails are served in a tropical setting and a simple menu is intended for day-long grazing showcases tasty grilled fish and meat cooked to perfection on a Josper Oven with easy salads and home cut fries to accompany.

## FACTS IN SHORT

**Perfect for:** Cocktail reception, set dinner and buffet event.

**Capacity:** Maximum 100 guests for cocktails canapés  
Maximum 40 guests for set menu  
Maximum 80 guests for buffet option  
(30 seats indoor / 50 seats outdoor)

**Private function:** Requires a venue charge and minimum spend on food and beverages from THB 300,000 net.

**Highlights:** Two levels may be used for cocktail receptions maximizing the sea views and daytime event options benefit from direct access to the beach.

# DINING CHOICES

## Food

Cocktails & Canapés

## Price per Guest

THB 600++ hourly charge

## Set Menu *(min. 15 guests)*

Set Menu I

THB 1,500++

Set Menu II

THB 1,800++

Set Menu III

THB 2,900++

## Buffet Options *(min. 40 guests)*

BBQ Buffet

THB 1,900++

Premium BBQ Buffet

THB 2,500++

## Drink

Alcoholic Open Bar

## Price per Guest

from THB 850++ hourly charge

Non-alcoholic Open Bar

THB 500++ hourly charge

All prices are per guest and in Thai Baht, 10% service charge and 7% VAT is added.



# SHIMMER





# SHIMMER

Offering uninterrupted views of the sea, the comfortable venue allows for a seamless event celebrating the delight of delectable cuisine right on Kamala Beach. Reward yourself and group with an uplifting sunset vibe with chilled-out music and as the stars emerge opt for a mouth-watering beachside supper.

## FACTS IN SHORT

**Perfect for:** Cocktail reception, set dinner and buffet event.

**Recommended timing:** Take time to enjoy the sunset and gentle sea breeze well into the evening.

**Capacity:** Maximum 70 guests for cocktails canapés  
Maximum 40 guests for set menu  
Maximum 70 guests for buffet option  
(50 seats indoor / 20 seats outdoor)

**Private function:** Requires a venue charge and minimum spend on food and beverages from THB 350,000 net.

**Highlights:** Nautical-inspired décor and picturesque sea views with direct access to the beach.

# DINING CHOICES

## Food

Cocktails & Canapés

## Price per Guest

THB 600++ hourly charge

## Seafood Set Menu *(min. 15 guests)*

Shimmer Signature Selection

THB 1,500++

## Buffet Options *(min. 40 guests)*

Thai Buffet Menu

THB 1,700++

BBQ Buffet Menu

THB 2,000++

International Buffet Menu

THB 2,300++

## Drink

Alcoholic Open Bar

## Price per Guest

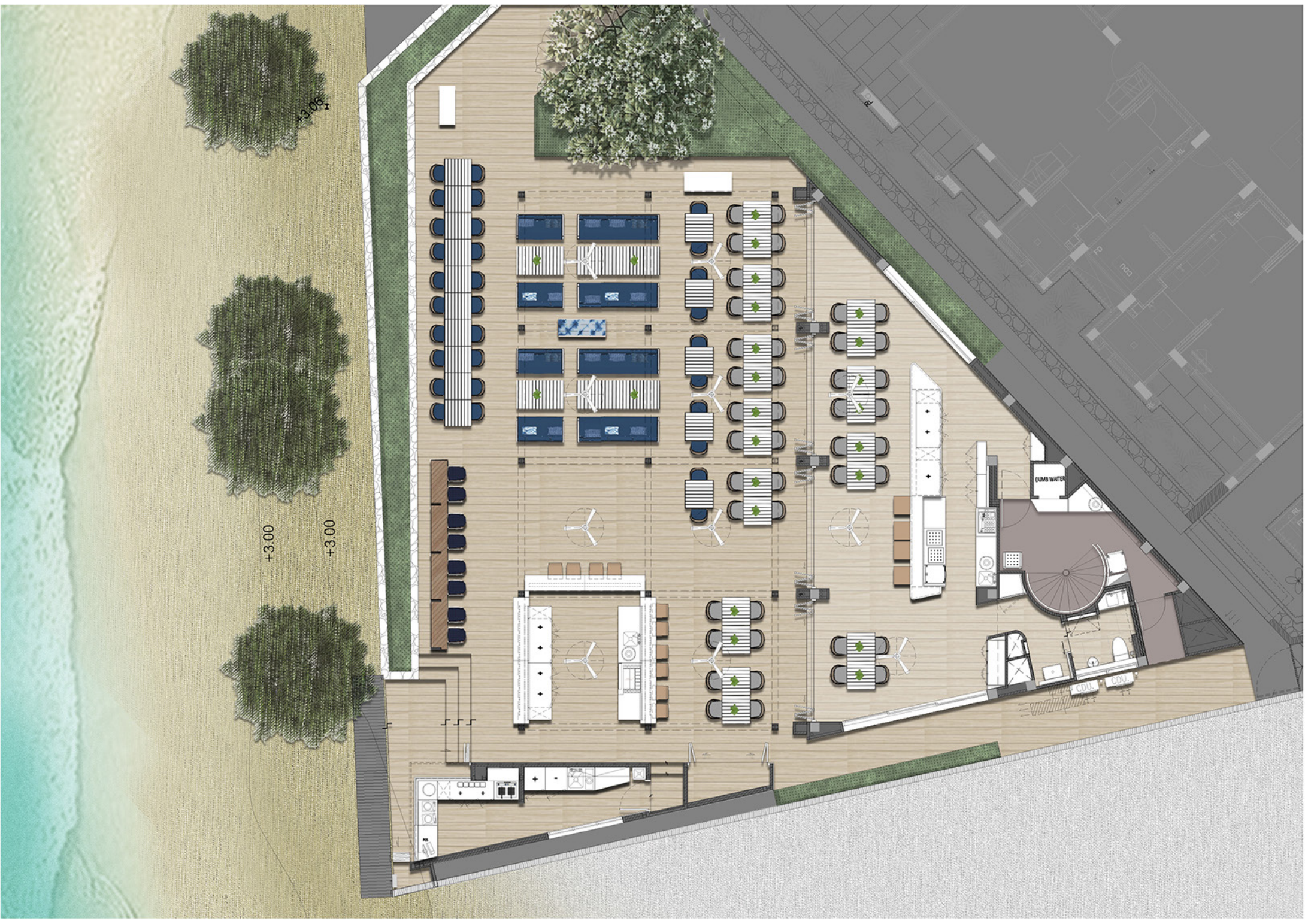
from THB 850++ hourly charge

Non-alcoholic Open Bar

THB 500++ hourly charge

All prices are per guest and in Thai Baht, 10% service charge and 7% VAT is added.





+3.06

+3.00

+3.00

DUMP WATER

COU

COU



# WAGYU STEAKHOUSE





# WAGYU STEAKHOUSE

Immerse in a glamorous setting and enjoy dining in a sumptuously designed interior. An ornate bar is a perfect place for pre-dinner handcrafted cocktails before descending to the beautiful dining room where a full wine cellar display and live kitchen action is sure to impress. Wagyu is conveniently connected to Twinpalms Phuket.

## FACTS IN SHORT

**Perfect for:** Cocktail reception, set menu.

**Recommended timing:** Ideal for evening dinner events.

**Capacity:** Maximum 40 guests for cocktails canapés  
Maximum 40 guests for set menu

**Private function:** Requires a venue charge and minimum spend on food and beverages from THB 300,000 net.

**Highlights:** Upper bar level may be used for a welcome cocktail reception and the dining room is ideal for relaxed evening dinner with a fantastic wine choice. Vegetarian options are also offered.

# DINING CHOICES

## Food

**Cocktails & Canapés**

## Price per Guest

THB 600++ hourly charge

**Set Menu** (*min. 15 guests*)

Set Menu

THB 3,500++

## Drink

Alcoholic Open Bar

## Price per Guest

from THB 850++ hourly charge

Non-alcoholic Open Bar

THB 500++ hourly charge

All prices are per guest and in Thai Baht, 10% service charge and 7% VAT is added.

# ORIENTAL SPOON





# ORIENTAL SPOON

Adjoined to the hotel lobby, this is an airy dining venue. The spacious site may be split into two sections, one with air-conditioning. With an open plan Martini bar as a focal point and a spacious terrace ideal for cocktail receptions, this restaurant area is a versatile space for events.

## FACTS IN SHORT

**Perfect for:** Cocktail reception, set dinner and buffet event

**Recommended timing:** Evening events are beautifully lit up with a cocktail reception poolside.

**Capacity:** Maximum 150 guests for cocktails canapés  
Maximum 40 guests for set menu  
Maximum 90 guests for buffet option  
(70 seats indoor / 20 seats outdoor)

**Private function:** Requires a venue charge and minimum spend on food and beverages from THB 250,000 net.

**Highlights:** Located within Twinpalms Phuket hotel, a venue that enjoys ample fresh air if required and close to the beautiful lagoon-style pool.

# DINING CHOICES

## Food

Cocktails & Canapés

## Price per Guest

THB 600++ hourly charge

## Set Menu *(min. 15 guests)*

Delicious Thai Cuisine

THB 1,500++

Western Cuisine (3 courses)

THB 1,700++

## Buffet Options *(min. 40 guests)*

Standard Thai Cuisine

THB 1,500++

International Cuisine

THB 1,700++

Barbecue Selection

THB 1,900++

## Drink

Alcoholic Open Bar

## Price per Guest

from THB 850++ hourly charge

Non-alcoholic Open Bar

THB 500++ hourly charge

All prices are per guest and in Thai Baht, 10% service charge and 7% VAT is added.

# MEETING & BOARD ROOMS





# MEETING & BOARD ROOMS

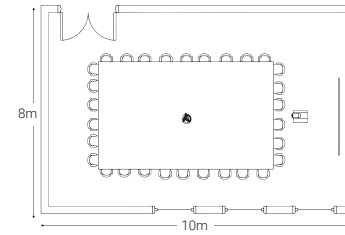
The main Conference Room overlooks the natural beauty of Surin Beach and with plenty of natural light, this space is sure to deliver an inspiring backdrop for your meeting or event.

With a top-notch food and beverage department catering to your guest's needs and a specialized event planning team, we will ensure that everything is seamless.

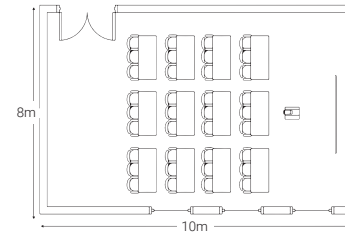
Our facilities and event's team are designed to ensure that when your great minds meet, rewarding outcomes will happen.

With capacity to comfortably host over 100 participants, your meeting, seminar or conference can be arranged in a variety of set up styles and space can be enlarged and also sectioned off into three smaller rooms to host several sessions for your team at one time.

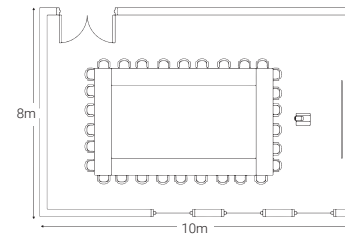
Overall, we offer 80 m<sup>2</sup> of meeting space, including break out areas for coffee and refreshment times.



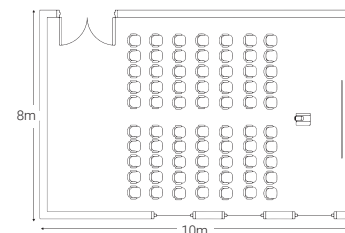
**Board Meeting**  
Guests sit around one large table



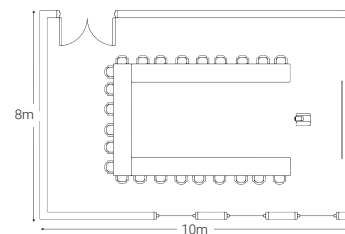
**Classroom**  
Three seats per table, all facing the front



**Hollow Square**  
Guests sit around the outside of the square



**Theatre**  
Rows of seats without tables, all facing a head table



**U-shape**  
Same as hollow square, but with one end open



# RATES & PACKAGES

## Standard Conference Rates

	FULL DAY	HALF DAY
Per Guest	THB1,800	THB 1,600
Conference Room	THB 6,000	THB 3,000

## Inclusions:

- Full day includes the use of one meeting room for up to 8 hours
- Half day includes the use of one meeting room for up to 4 hours
- One group lunch
- Stationery including note pad, pen, flip chart, whiteboard and markers
- Wireless internet connection in the meeting room
- Speaker and a microphone
- Floral arrangement
- A coffee and light refreshment break
- Drinking water and mints throughout the day

## Meeting Equipment and Service Rates

LCD projector	from THB 10,000/day
Microphone	from THB 5,000/day
TV	from THB 2,000/day
Computers	from THB 5,000/day
Printers	from THB 5,000/day
Copy & printing service	Black/white at THB 5/page Color at THB 20/page
Photographer	from THB 6,000/hour

All prices are per guest in Thai Baht, 10% service charge and 7% VAT is added.





# THAI SALA

**Perfect for:** Cocktail reception and a sit-down dinner.

**Recommended time:** Catch the sunset and begin your soirée at 6pm until 9pm.

**Capacity:** Maximum 40 guests

**Highlights:** located within Twinpalms Phuket hotel, overlooking the tranquil lagoon-style pool.

## DINING CHOICES

### Food

Cocktails & Canapés

### Price per Guest

THB 600++ hourly charge

### Drink

Alcoholic Open Bar

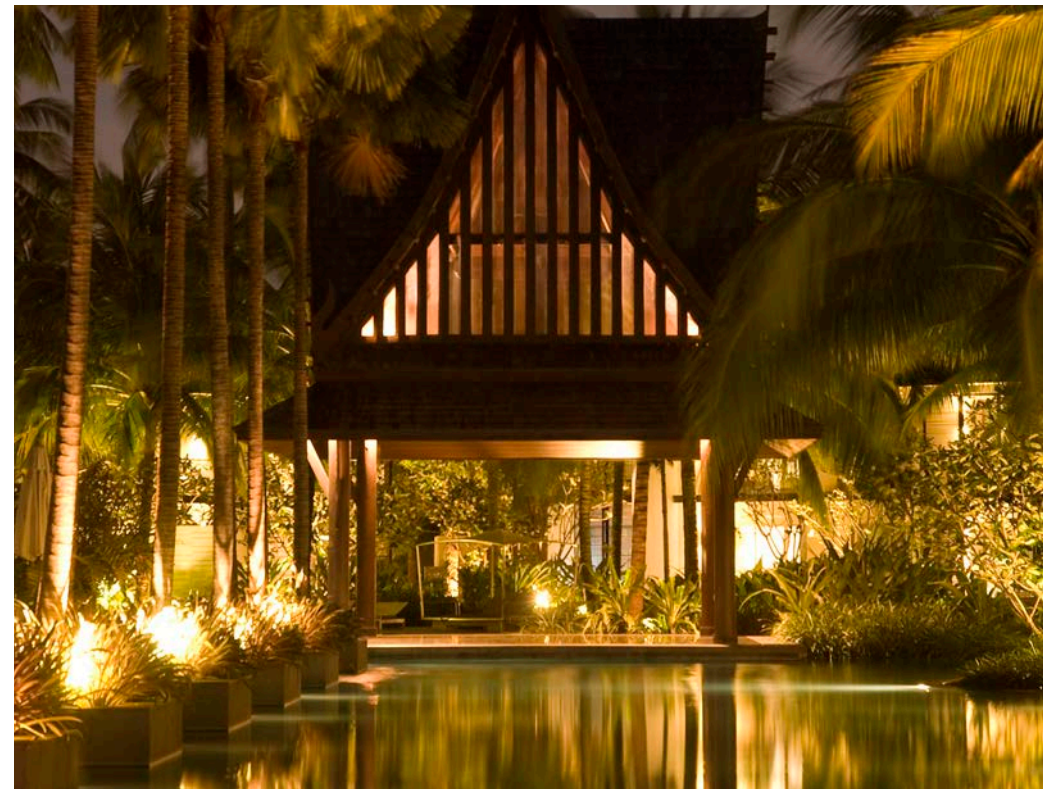
Non-alcoholic Open Bar

### Price per Guest

from THB 650++ hourly charge

THB 350++ hourly charge

All prices are per guest and in Thai Baht, 10% service charge and 7% VAT is added.







# WINE ROOM

**Perfect for:** Cocktails canapés.

**Recommended time:** begin in the sala for drinks at sunset and then venture into the wine room for a private dining experience.

**Capacity:** Maximum 20 guests for cocktails canapés  
Maximum 15 guests for set menu

**Highlights:** Located within Twinpalms Phuket hotel, overlooking the tranquil lagoon-style pool.

## DINING CHOICES

### Food

Cocktails & Canapés

### Price per Guest

THB 600++ hourly charge

### Set Menu *(min. 20 guests)*

Delicious Thai Cuisine

THB 1,500++

Western Cuisine (3 courses)

THB 1,700++

### Drink

Alcoholic Open Bar

### Price per Guest

from THB 650++ hourly charge

Non-alcoholic Open Bar

THB 350++ hourly charge

All prices are per guest and in Thai Baht, 10% service charge and 7% VAT is added.





# PRESIDENTIAL PENTHOUSE

**Perfect for:** Cocktail reception and a sit-down dinner.

**Recommended time:** Any time for a private dining experience

**Capacity:** Maximum 40 guests for cocktails canapés  
Maximum 20 guests for set menu

**Highlights:** Assured privacy and intimacy. Subject to availability.

## PACKAGE

From THB 50,000 net for up to 10 guests

- Additional guest(s) THB 3,000 net

### Inclusions:

- Butler
- Thai Cuisine Set Menu (sharing)
- 2 hours open bar of non-alcoholic beverages

All prices are per guest and in Thai Baht, 10% service charge and 7% VAT is added.







# ANDAMAN CRUISES

Perfect for: Entertaining important clients or rewarding your team to a luxurious cruise.

Highlights: Enjoy the splendid sights of the surrounding islands from the comfort of MY Olympia, a 23-metre motor yacht

CHARTER	PERS.	PRICE	LOCATION	ADDITIONAL*
Half Day	8	49,000	Koh Kai Nok	2,000/extra person

\*Prices are in THB

### Conditions:

- Mon, Wed, Fri, Sat and Sun, 1pm- 6pm for 8 persons
- Saturday & Sunday surcharge of THB 10,000
- Additional guests THB 2,000 per/pers. Maximum 20 pers.

### Inclusion:

- Captain & Crew
- Soft drinks/water
- Fresh fruits
- Light lunch
- Usage of two bedrooms and 1 bathroom
- Water sports and on-board equipment

### Excluding:

- Alcoholic beverages and food, must be purchased on board

Alternative destinations THB 25'000 extra

- Maiton Island + Kai Nok Island
- Promptheh Cape for Sunset
- Phang Nga Bay (Panak, Hong & James Bond Island)







106/46 Moo3, Surin Beach Road, Cherngtalay, Phuket 83100, Thailand  
Tel.: +66 76 316 500 | [book@twinpalmsevents.com](mailto:book@twinpalmsevents.com) | [twinpalmsevents.com](http://twinpalmsevents.com)